

PLEASE READ THE INSTRUCTIONS CAREFULLY BEFORE FITTING THE KIT.**If you have a problem, however small, call our Technical Department.**

Tel:- 01925 636950. Fax:- 01925 418948. Monday to Friday 9am - 5pm.

- 1 Remove the resonator box, pull upwards, **Drawing A.**
- 2 Remove the air box assembly, (3 Screws) from the rubber intake hose.
- 3 Fit the new bracket to the tube using the stud, nut and spring washer. **Drawing B.**
Fit the tube into the intake hose.
- 4 Fit the bracket to the rear air box mounting using the screw and spring washer supplied, **Drawing B.** Fit the filter up to the tube and adjust the filter until the K&N logo is straight before tightening in place. Tighten the clip until the filter just rotates, then give one full turn (360 degrees). No more. **Don't overtighten the clips.**
- 5 **Cold Air System.**
Remove the plastic screen, next to the radiator. Cut out section as **Drawing C**, using a shortened hacksaw blade, cut the two long sections, bend the free area back, and cut the complete section out. Replace plastic screen.
- 6 **Carefully** expand the flexi hose to approx. 32"/81cm. Feed the hose through the cut out in the screen and attach to the upright section in the grille, using a small plastic tie. Pierce a small hole in flexi hose. Feed the hose under the top hose and over the top hose. Attach the fan bracket using a long plastic tie, finish the flexi hose on the top of the bottom hose, 10cm/4" from the filter (**no nearer**), **Drawing D & E.**
- 7 **Tuning**
CAT. Cars. No adjustments can be made.
An increase in fuel may be required if further engine modifications are carried out.
- 8 **Filter maintenance.**
Under normal conditions clean and reoil the filter at approx. 40,000 miles / 65,000 Km.
Use only K&N cleaner and oil and follow the instructions carefully.

K&N filters are pre-oiled ready to fit.**The advantage's of K&N's cold air intake system.**

Cooler air being denser, will show positive improvements in power over filter systems that draw hot air from the engine bay.

This Kit Should Contain :-

- 1 x Clamp-on filter.
- 1 x Cold air hose assembly.
- 1 x Metal tube.
- 1 x Instruction sheet.
- 1 x Instruction pack:-
 - 1 x Filter maintenance sheet.
 - 1 x K&N window sticker.
 - 1 x Million mile warranty card.
 - 1 x Leaflet
- 1 x Fixing kit containing :-
 - 1 x M6 x 12 hex screw.
 - 2 x 6mm spring washers.
 - 1 x M6 nut.
 - 1 x Plastic cable tie (35cm long).
 - 1 x Plastic cable tie (19cm long).
 - 1 x Hose clip size 48.
 - 1 x Bracket.

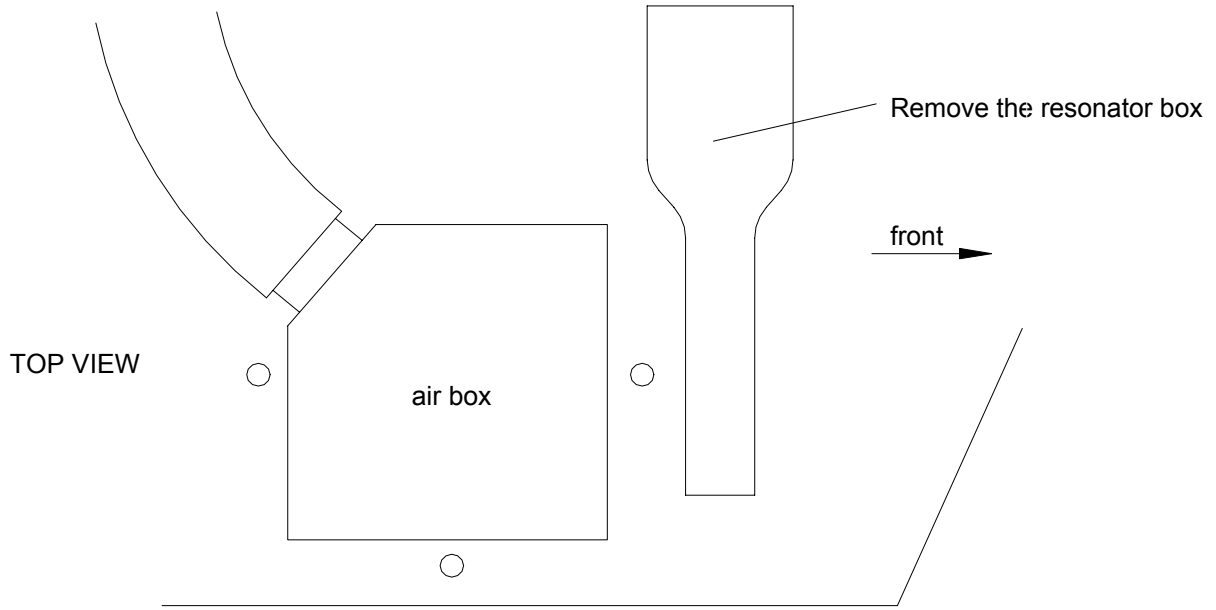
**IMPORTANT INSTRUCTIONS
FOR ROUND ENTRY
CLAMP ON AIR FILTERS**

Gently tighten the hose clip to the point where the filter will just rotate on the pipe or intake flange. Reposition the K&N logo straight, then **give the clip two turns i.e. 360 , no more.**

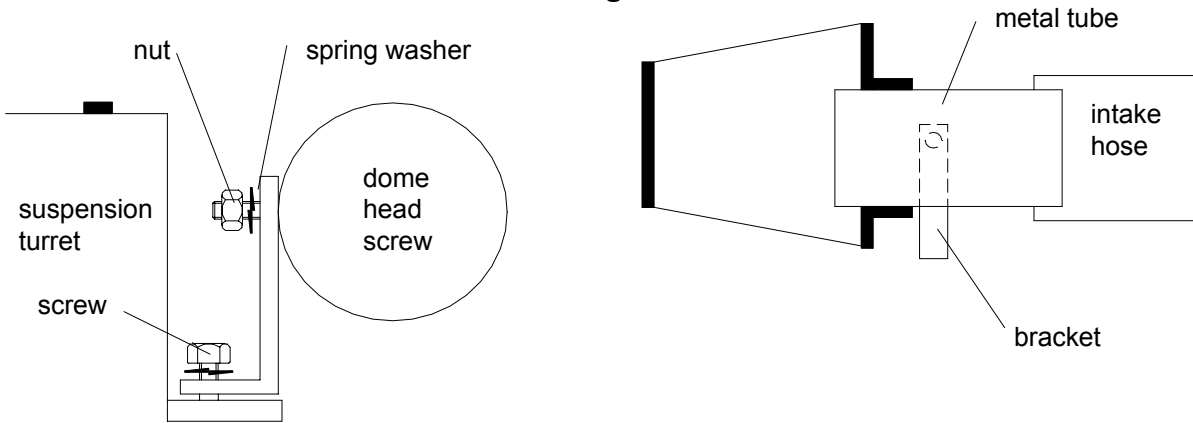
FITTING YOUR OWN 57i KIT

If not, **it is essential** that the person fitting the kit (e.g. mechanic) **carefully follows these particular instructions** even if he has fitted K&N kits before. This will save you both time and money. Kits incorrectly fitted may show a loss in performance e.g. the positioning of the essential cold air hose, (flexi expandable and rubber hoses are used).

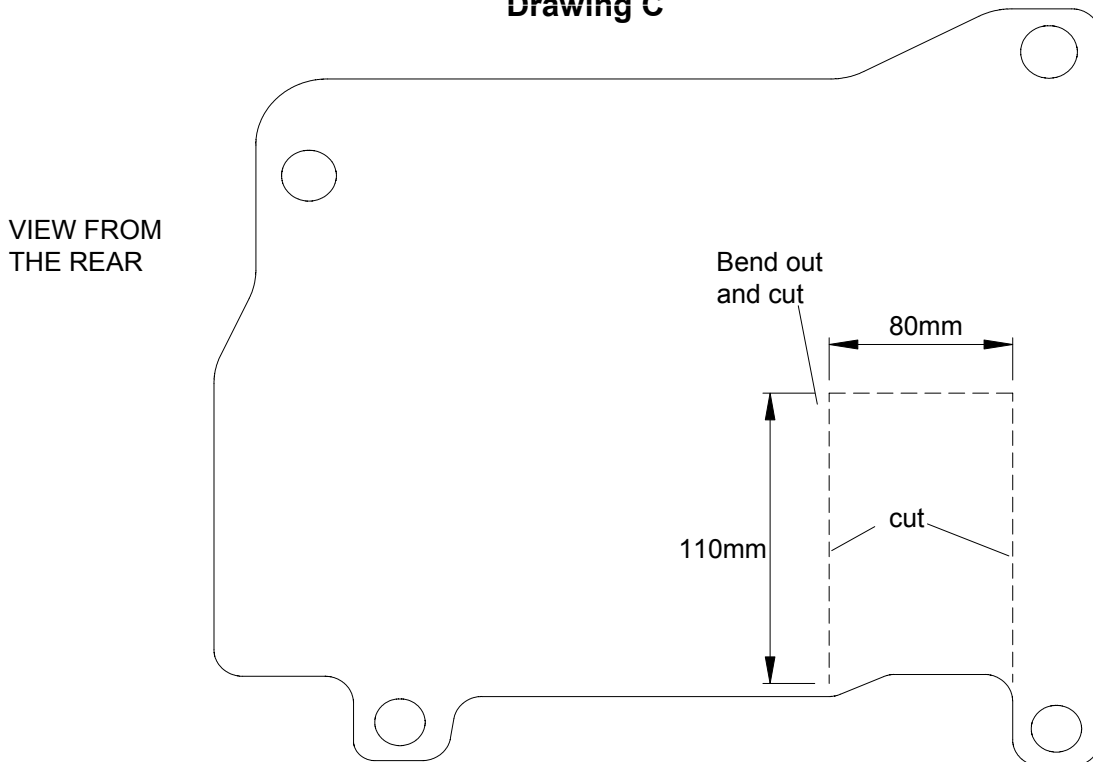
A final check under the bonnet, by yourself, with the instructions, would seem sensible.



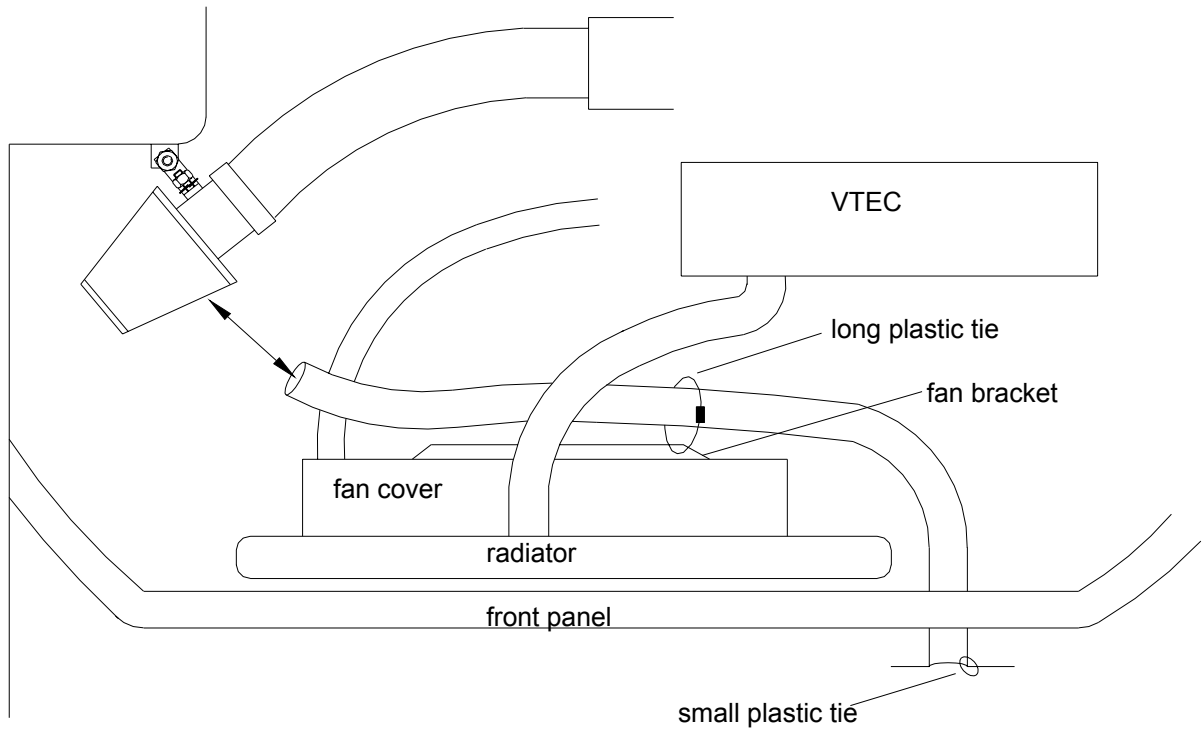
Drawing B



Drawing C



Drawing D



Drawing E

