



INSTALLATION INSTRUCTIONS

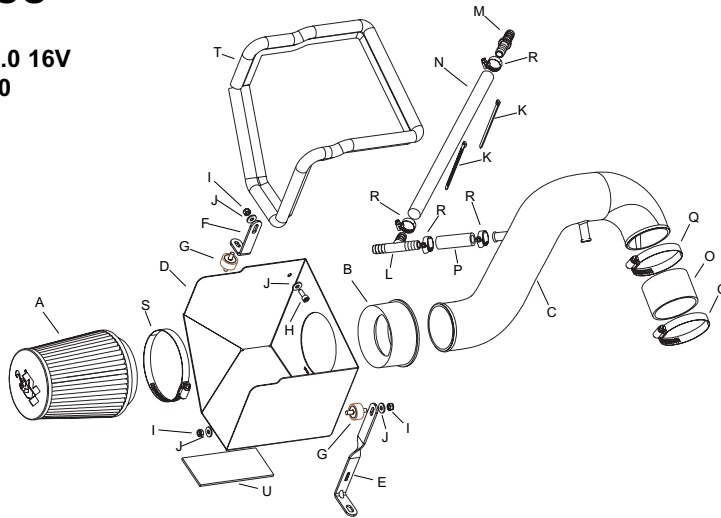
571-4000

SUBARU

Impreza L4-2.0 16V
Mar'99-Oct'00

TOOLS NEEDED:

Flat Blade Screwdriver
Socket Extension
4mm Allen Wrench
Ratchet
10mm Socket
Pair of Diag. Cutters
Pair of Pliers



PARTS LIST:

A	Filtercharger® Element	RC-4550	1
B	Adapter	21561	1
C	Intake Tube	27077	1
D	Heat Shield	07434	1
E	L" Twist Bracket	070003	1
F	L" Bracket	070742	1
G	Rubber Mounted Stud	07027	2
H	M6-1.00 x 16mm Allen	07818	1
I	6mm nylock nut	07553	3
J	Flat Washer	08275	4
K	Cable Tie	21592	2
L	T" Vent	08166	1
M	1/2" Hose Mender	08096	1
N	15.75"L Silicone Hose	08414	1
O	2.75" ID Silicone Hose	08756	1
P	2.38"L Silicone Hose	08415	1
Q	Hose Clamp #44	08577	2
R	Hose Clamp #6	08407	4
S	Hose Clamp #64	08648	1
T	Edge Trim 42"L	102499	1
U	Gasket Pad	09331	1

TO START:

1. Turn the ignition OFF and disconnect the vehicle's negative battery cable.



2. Unclip & remove the 3 engine breather hoses from the air box base.



3. Remove the bolts securing the air box assembly to the two support pillars.



4. Unclip & remove the air box from the throttle housing.



5. Unclip & remove the air box intake pipe at the flexi joint. Carefully remove the complete air box assembly from the vehicle.



6. Remove the nut & 2 bolts securing the intake pipe / resonator box assembly; carefully remove the complete intake pipe assembly from the vehicle.



7. Fit the long mounting bracket to the chassis leg using the original air box mounting bolt, do not fully tighten yet.



8. Unbolt & remove the intake pipe/ resonator box rubber mounting, replace it with a studded mounting supplied using the original nut.



9. Fit the short mounting bracket to the studded mounting using the original nut.



10. Clip the edge trim to outside edge of the heat shield as shown. Lightly lubricate the edge trim bulb with a smear of grease.



11. Stick the supplied foam pad to the underside of the heat shield.



12. Secure the heat shield to the long mounting bracket using a studded mounting, nylock nuts & washers supplied. Do not fully tighten yet.



13. Secure the heat shield to the short mounting bracket using an allen head bolt, nylock nut & washer supplied. Do not fully tighten yet.



14. Fit the silicon hose & rubber filter adapter onto the new intake pipe as shown.



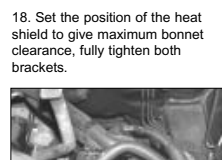
15. Insert the intake pipe / rubber filter adapter into the large hole in the heat shield, ensure that the adapter lip sits flush with the shield.



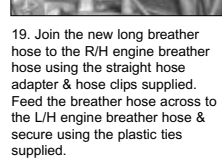
16. Secure the intake pipe / silicon hose to the throttle body & tighten the hose clips supplied.



17. Attach the new Filtercharger onto the rubber adapter. Ensure the filter sits flush with heat shield; fully tighten the hose clip supplied.



18. Set the position of the heat shield to give maximum bonnet clearance, fully tighten both brackets.



19. Join the new long breather hose to the R/H engine breather hose using the straight hose adapter & hose clips supplied. Feed the breather hose across to the L/H engine breather hose & secure using the plastic ties supplied.



20. Join the L/H breather hose to the new long breather hose using the "T" hose adapter & hose clips supplied. Fit the new short breather hose to the "T" hose adapter & then join the hose to the tube on the side of the new intake pipe using the original hose clips.



21. Attach the original central breather hose to the tube on the side of the intake pipe, secure using the original hose clip.

22. Carry out a final check of the height / alignment of the K&N induction system before closing the bonnet / starting the engine. Installation is now complete.

ROAD TESTING:

1. Start the engine with the transmission in neutral or park, and the parking brake engaged. Listen for air leaks or odd noises. For air leaks secure hoses and connections. For odd noises, find the cause and repair before proceeding. This kit will function identically to the factory system except for being louder and much more responsive.

2. Test drive the vehicle. Listen for odd noises or rattles and fix as necessary.

3. If the road test is fine, you can now enjoy the added power and performance from your kit.

4. K&N suggests checking the filtercharger element periodically for excessive dirt build up. When the element becomes covered in dirt (or once a year), service it according to the instructions on the recharger service kit that is included in this kit.