



INSTALLATION INSTRUCTIONS

Part Number E-2860

This filter fits: **See current catalog for applications**

FREE K&N DECAL** To register your warranty, please see us online at knfilters.com/register. **FREE K&N DECAL

Congratulations, you have purchased the finest air filter that money can buy. With proper care, this filter will last you multiple seasons. The following procedures **MUST** be followed to ensure the proper fit and seal of the K&N Filtercharger®.

1. Remove the dirty air filter from the air filter housing.
2. Wipe out any dust or dirt from the air filter housing.
3. Install the Drycharger onto the K&N filter, ensuring that the wrap is secured over the lip. See Fig 1.
4. Using the supplied tube of air filter grease, liberally apply a coat of grease to the groove of the air filter. See Fig 2a and 2b.
5. Install the K&N FILTERCHARGER into the air filter housing. See Fig. 3
6. Install supplied rubber washer under wingnut on filter. Do not re-use diffuser. See Fig. 4a and 4b.
7. Install the air filter housing cover.

NOTE: DO NOT RE-USE THE PLASTIC DIFFUSER, IT WILL NOT ALLOW THE K&N FILTER TO SEAL PROPERLY.

THESE INSTRUCTIONS MUST BE FOLLOWED EVERY TIME THE FILTER IS SERVICED, OTHERWISE THE FILTER MAY NOT SEAL, AND DAMAGE TO THE ENGINE COULD RESULT.

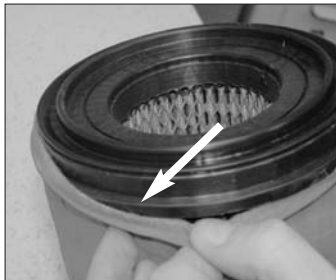


Fig. 1

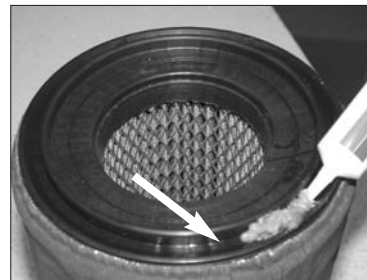


Fig. 2a

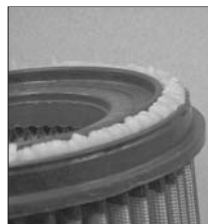


Fig. 2b



Fig. 3



Fig. 4a



Fig. 4b